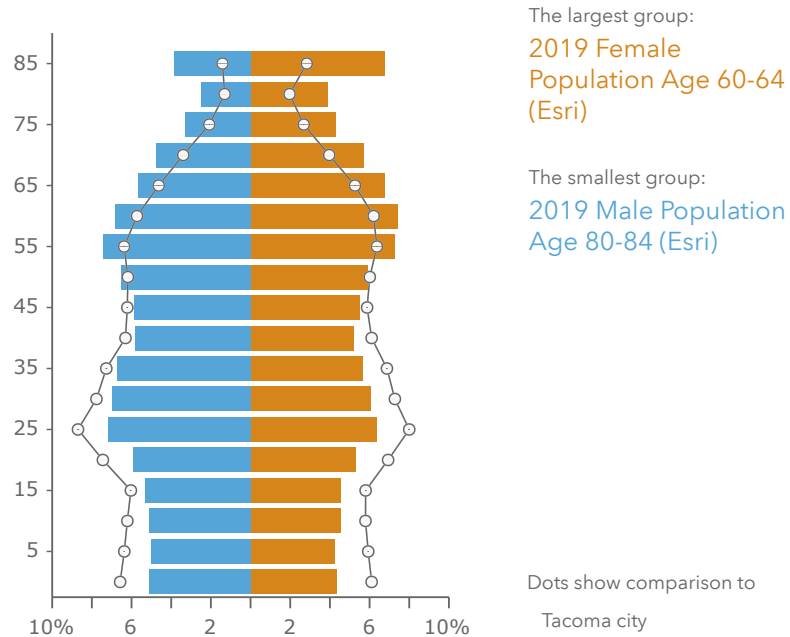


Source: This infographic contains data provided by American Community Survey (ACS), Esri, Esri and Bureau of Labor Statistics, Esri and Infogroup. The vintage of the data is 2014-2018, 2019.

Age Pyramid



Race and Ethnicity

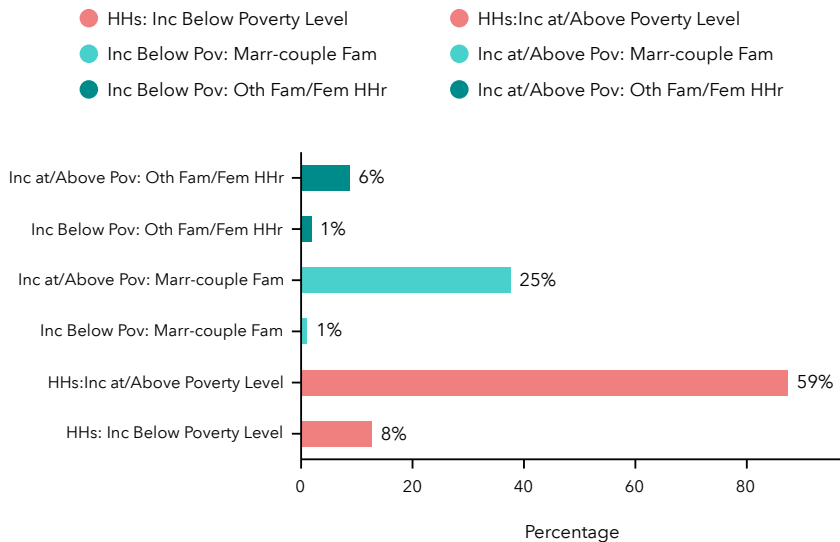
The largest group: White Alone (71.86)

The smallest group: Pacific Islander Alone (0.77)

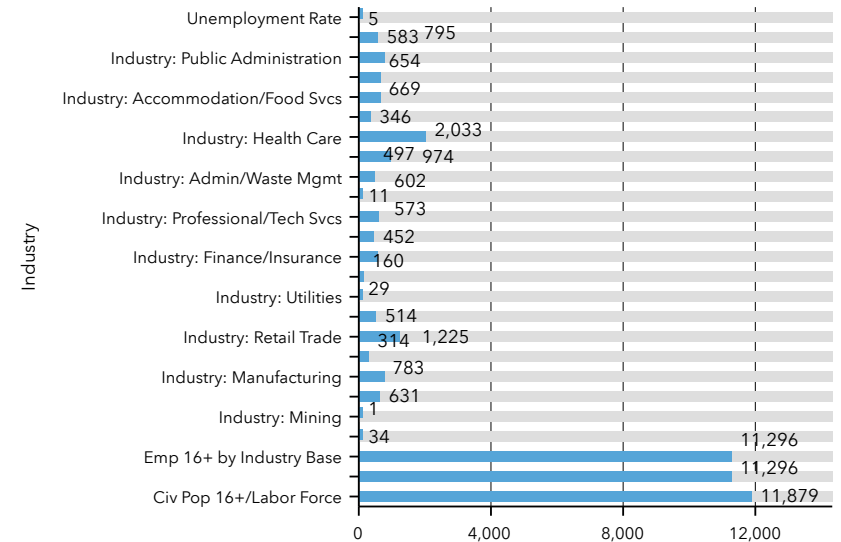
Indicator	Value	Difference	
White Alone	71.86	+1.28	
Black Alone	9.33	+1.97	
American Indian/Alaska Native Alone	1.00	-0.42	
Asian Alone	6.82	+0.18	
Pacific Islander Alone	0.77	-0.88	
Other Race	2.31	-2.02	
Two or More Races	7.91	-0.11	
Hispanic Origin (Any Race)	7.80	-3.65	

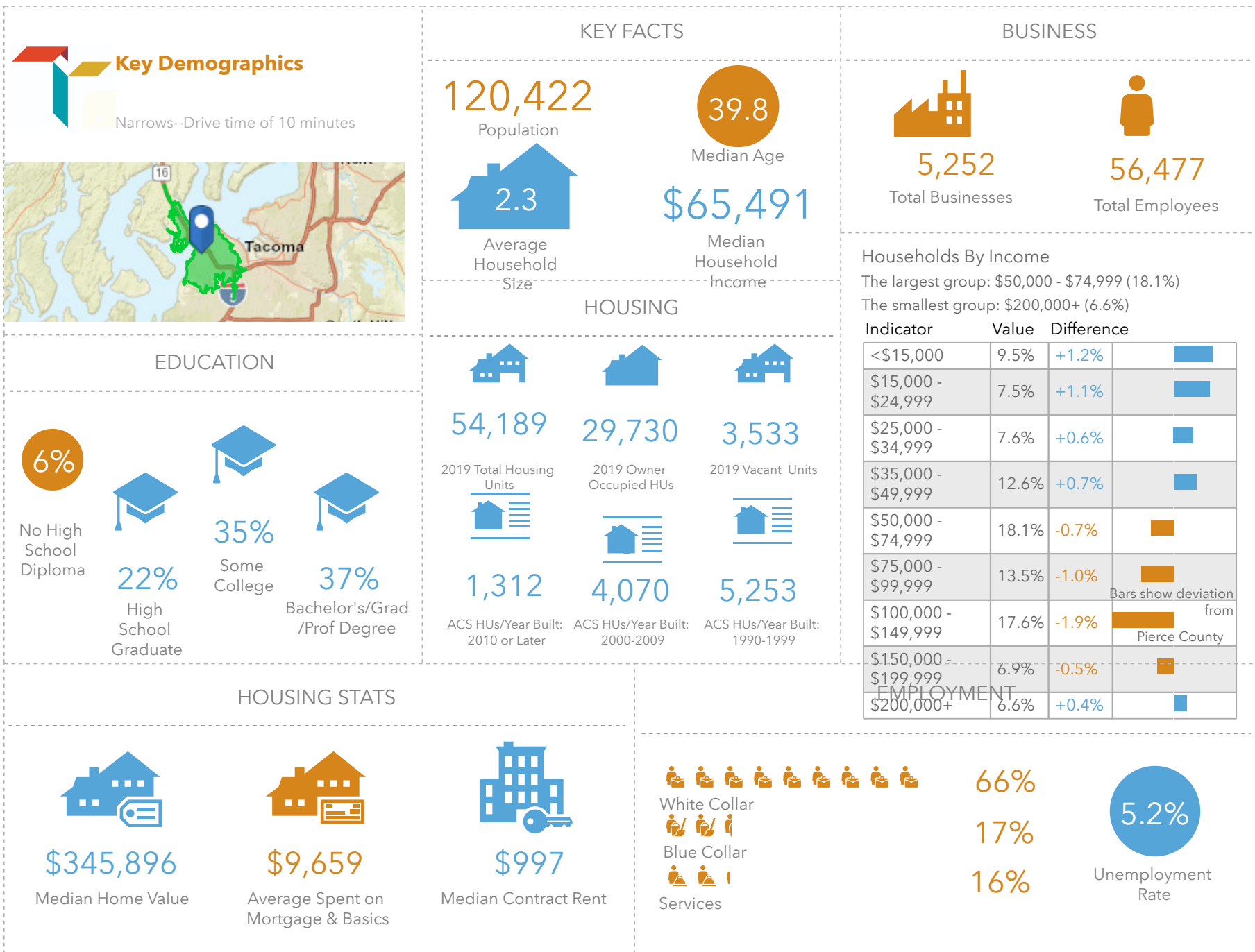
Bars show deviation from
Pierce County

2014-2018 Households by Poverty Status (ACS)



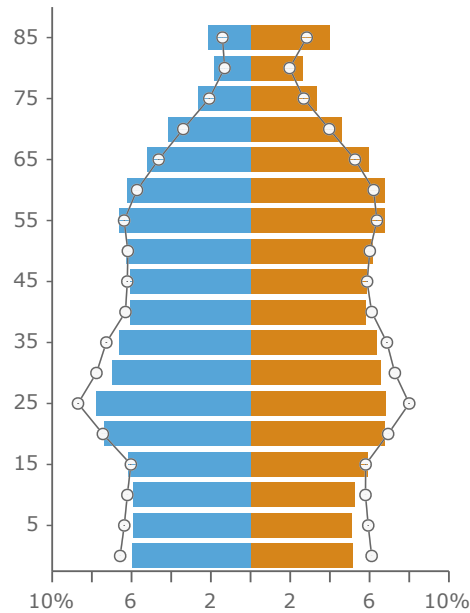
2019 Labor Force by Industry (Esri)





Source: This infographic contains data provided by American Community Survey (ACS), Esri, Esri and Bureau of Labor Statistics, Esri and Infogroup. The vintage of the data is 2014-2018, 2019.

Age Pyramid



Race and Ethnicity

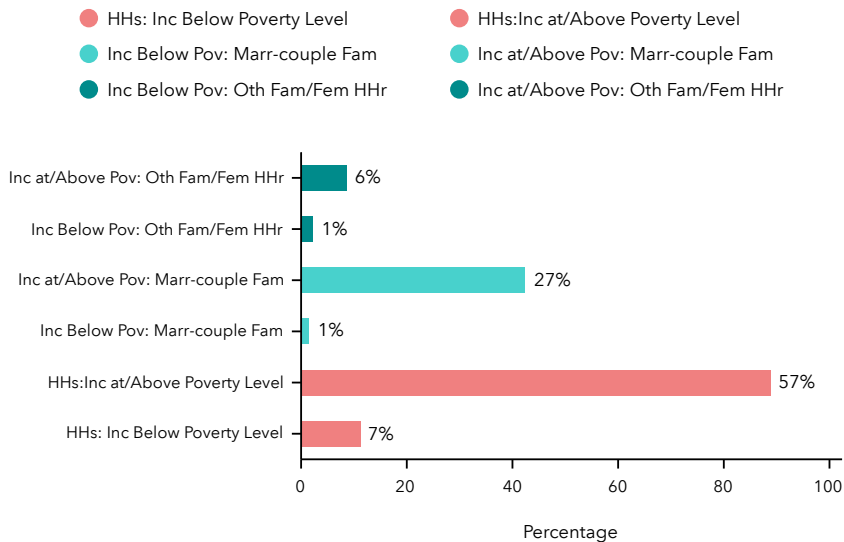
The largest group: White Alone (71.18)

The smallest group: Pacific Islander Alone (0.87)

Indicator	Value	Difference	
White Alone	71.18	+0.60	
Black Alone	9.68	+2.32	
American Indian/Alaska Native Alone	1.07	-0.35	
Asian Alone	6.13	-0.51	
Pacific Islander Alone	0.87	-0.78	
Other Race	2.62	-1.71	
Two or More Races	8.46	+0.44	
Hispanic Origin (Any Race)	8.85	-2.60	

Bars show deviation from Pierce County

2014-2018 Households by Poverty Status (ACS)



2019 Labor Force by Industry (Esri)

