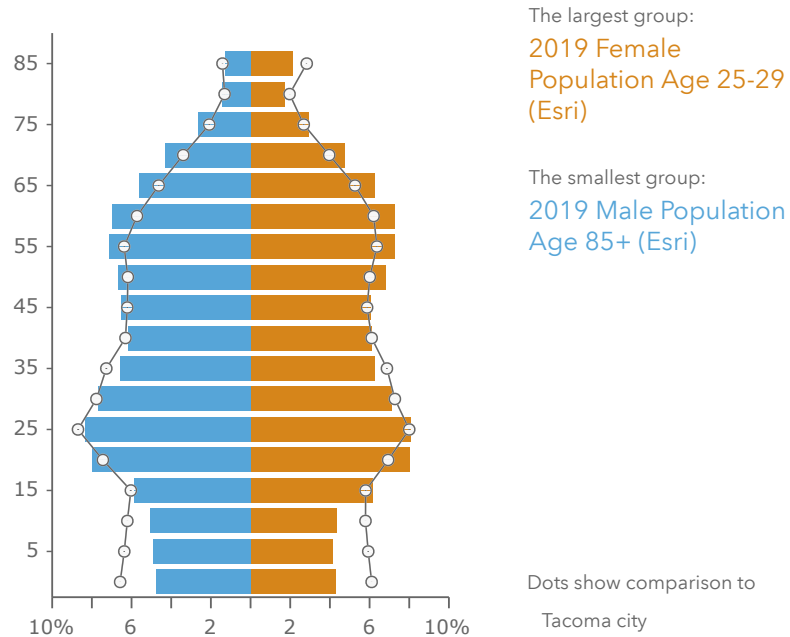


Source: This infographic contains data provided by American Community Survey (ACS), Esri, Esri and Bureau of Labor Statistics, Esri and Infogroup. The vintage of the data is 2014-2018, 2019.

Age Pyramid



Race and Ethnicity

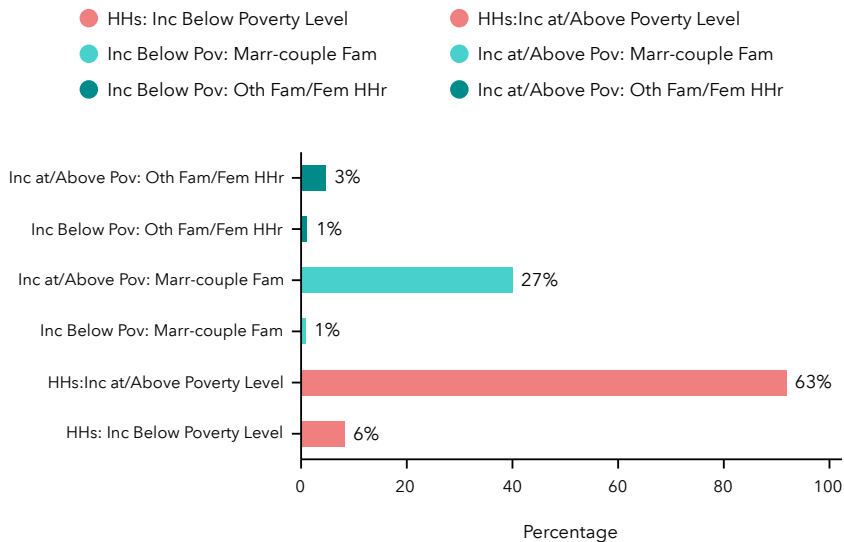
The largest group: White Alone (82.75)

The smallest group: Pacific Islander Alone (0.37)

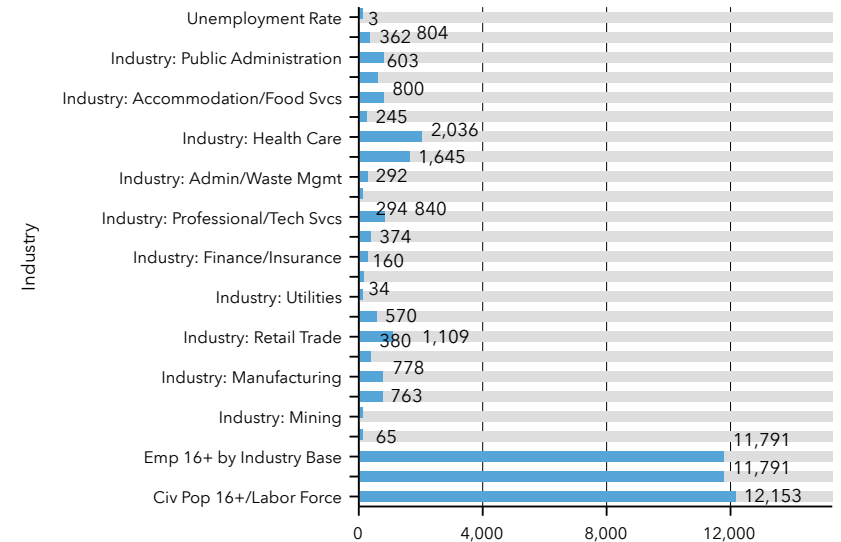
Indicator	Value	Difference	
White Alone	82.75	+12.17	
Black Alone	4.06	-3.30	
American Indian/Alaska Native Alone	1.02	-0.40	
Asian Alone	3.79	-2.85	
Pacific Islander Alone	0.37	-1.28	
Other Race	1.63	-2.70	
Two or More Races	6.38	-1.64	
Hispanic Origin (Any Race)	6.58	-4.87	

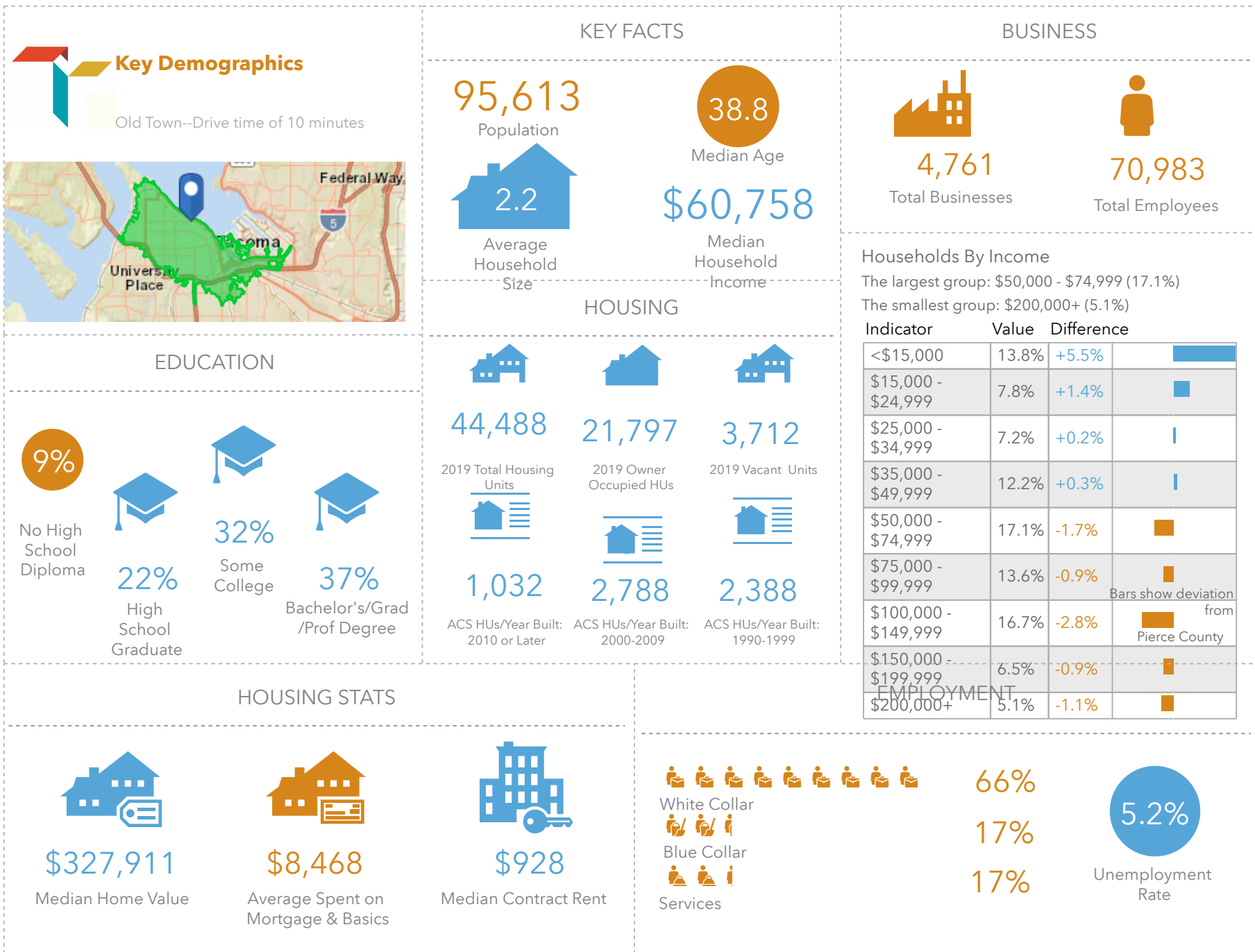
Bars show deviation from
Pierce County

2014-2018 Households by Poverty Status (ACS)



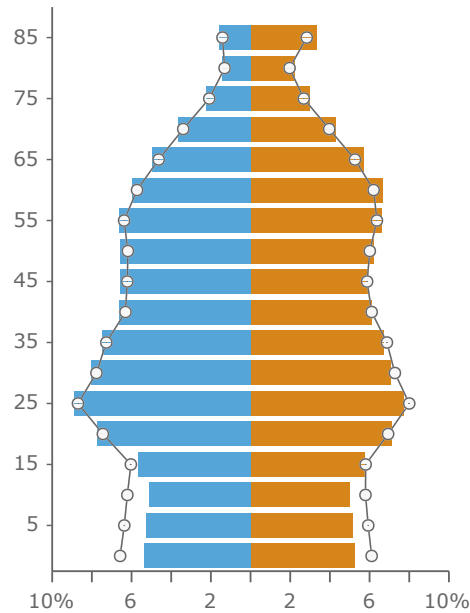
2019 Labor Force by Industry (Esri)





Source: This infographic contains data provided by American Community Survey (ACS), Esri, Esri and Bureau of Labor Statistics, Esri and Infogroup. The vintage of the data is 2014-2018, 2019.

Age Pyramid



Race and Ethnicity

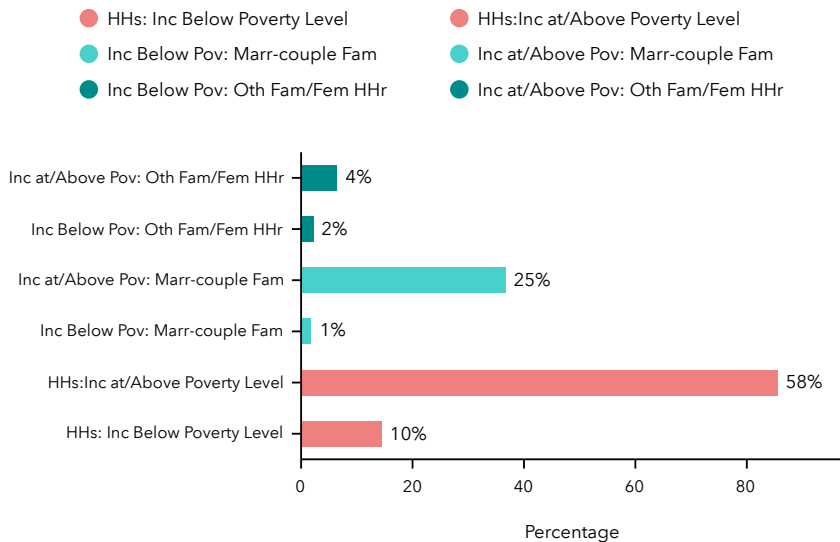
The largest group: White Alone (69.92)

The smallest group: Pacific Islander Alone (0.85)

Indicator	Value	Difference	
White Alone	69.92	-0.66	
Black Alone	10.91	+3.55	
American Indian/Alaska Native Alone	1.68	+0.26	
Asian Alone	5.36	-1.28	
Pacific Islander Alone	0.85	-0.80	
Other Race	3.02	-1.31	
Two or More Races	8.27	+0.25	
Hispanic Origin (Any Race)	10.12	-1.33	

Bars show deviation from Pierce County

2014-2018 Households by Poverty Status (ACS)



2019 Labor Force by Industry (Esri)

