

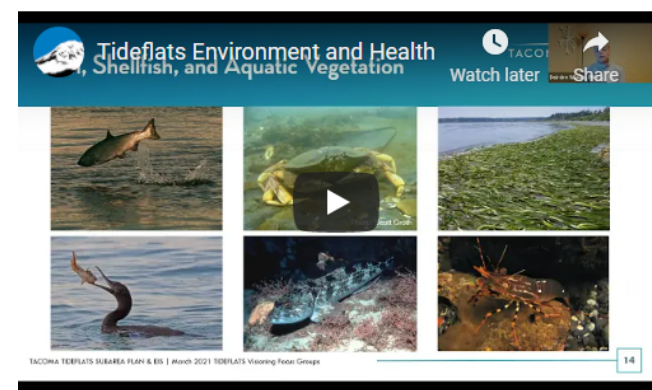
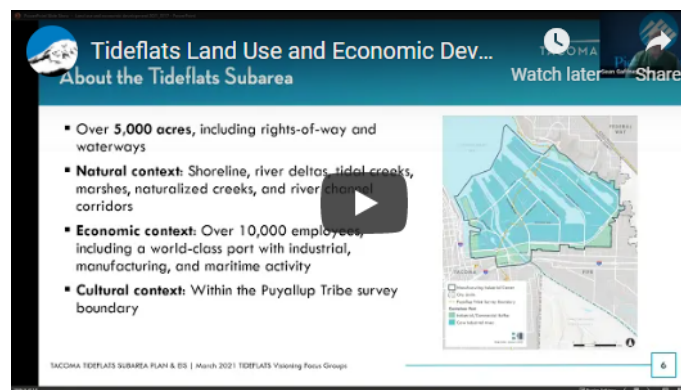
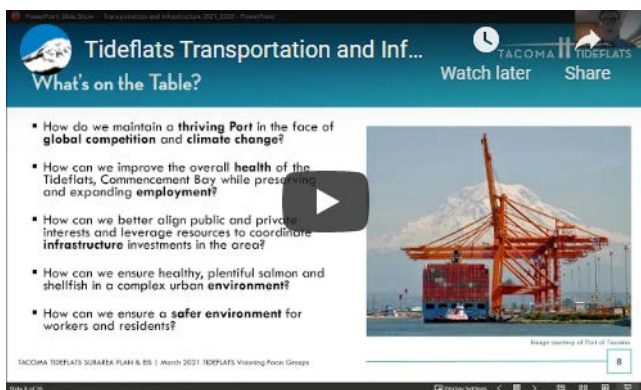
TAKE THE TIDEFLATS SURVEY

AVAILABLE NOW
THROUGH APRIL 30!

AS AN EARLY STEP IN THE PLANNING PROCESS, WE WANT TO HEAR YOUR THOUGHTS ON WHAT KIND OF FUTURE YOU WANT TO SEE IN THE TIDEFLATS. PLEASE TAKE OUR ONLINE SURVEY TODAY AND TELL US:
HOW YOU THINK THE TIDEFLATS SHOULD LOOK AND FUNCTION OVER THE NEXT 20 YEARS?
WHAT WOULD YOU WANT TO PRESERVE, CREATE, OR CHANGE ABOUT THE TIDEFLATS?

TIDEFLATS ONLINE SURVEY

IF YOU MISSED ONE OF OUR RECENT EDUCATIONAL VISIONING PANELS, THE VIDEOS ARE NOW POSTED ON THE WEBPAGE OR YOU CAN CLICK ON THE IMAGES BELOW:



Learn more about the Plan at www.cityoftacoma.org/tideflats

ABOUT THE TIDEFLATS SUBAREA PLANNING PROJECT

THE TIDEFLATS SUBAREA PLANNING PROCESS, A PARTNERSHIP BETWEEN CITY OF TACOMA, PUYALLUP TRIBE OF INDIANS, PORT OF TACOMA, PIERCE COUNTY AND CITY OF FIFE, IS INTENDED TO CREATE A SHARED LONG-TERM VISION AND MORE COORDINATED APPROACH TO DEVELOPMENT, ENVIRONMENTAL REVIEW, AND STRATEGIC CAPITAL INVESTMENTS IN THE TIDEFLATS. COMPLETION OF THE SUBAREA PLAN WILL SUPPORT THE ONGOING ELIGIBILITY FOR AND PRIORITIZATION OF TRANSPORTATION FUNDING IN THE REGIONAL MANUFACTURING AND INDUSTRIAL CENTER.

ABOUT THE TIDEFLATS

THE TIDEFLATS IS AN AREA OF OVER 5,000 ACRES OF WATERFRONT LAND PROVIDING VITAL SALTWATER AND ESTUARINE HABITAT FOR SALMON, SHELLFISH AND OTHER MARINE LIFE, THE TIDEFLATS IS AN ECONOMIC CENTER THAT INCLUDES INDUSTRIAL AND MANUFACTURING AND MARITIME ACTIVITY IN A WORLD CLASS PORT AND IS THE ANCESTRAL LANDS OF THE PUYALLUP TRIBE OF INDIANS. THE AREA IS DESIGNATED AS THE PORT OF TACOMA MANUFACTURING INDUSTRIAL CENTER (MIC). THE MIC IS HOME TO TACOMA AND PIERCE COUNTY'S HIGHEST CONCENTRATION OF INDUSTRIAL AND MANUFACTURING ACTIVITY AND IS THE WORK SITE FOR ABOUT 9,800 EMPLOYEES.